

Client Name: DONGGUAN CHENGXI ELECTRONIC CO., LTD
Client Address: NUMBER175, SHICHANG ROAD, SANGYUAN INDUSTRIAL PARK, DONGCHENG DISTRICT, DONGGUAN CITY.

Sample Name: Film-capacitor
Tested Basic Model No.: X2
Tested Extended Model No.: X2-GREY, X2-BLUE, CBB, CBB21-B-GREY, CL21
 The above sample(s) and information were provided by the client.

SGS Job No.: SZP25-057989
Sample Receiving Date: Nov 13, 2025
Verification Period: Nov 13, 2025 ~ Nov 25, 2025
Verification Requested: With reference to RoHS Directive (EU) 2015/863 amending 2011/65/EU.
Verification Method(s): Please refer to next page(s).
Verification Result(s): Please refer to next page(s).

Test Result Summary:

Test Items	Conclusion
EU RoHS Directive (EU) 2015/863 amending Annex II to Directive 2011/65/EU - Lead, Mercury, Cadmium, Hexavalent chromium, Polybrominated biphenyls (PBB), Polybrominated diphenyl ethers (PBDE), Bis(2-ethylhexyl) phthalate (DEHP), Butyl benzyl phthalate (BBP), Dibutyl phthalate (DBP) and Diisobutyl phthalate (DIBP)	Pass

Signed for and on behalf of
 SGS-CSTC Standards Technical Services Co., Ltd. Shenzhen Branch

Andy Ni
 Approved Signatory

Scan to see the report



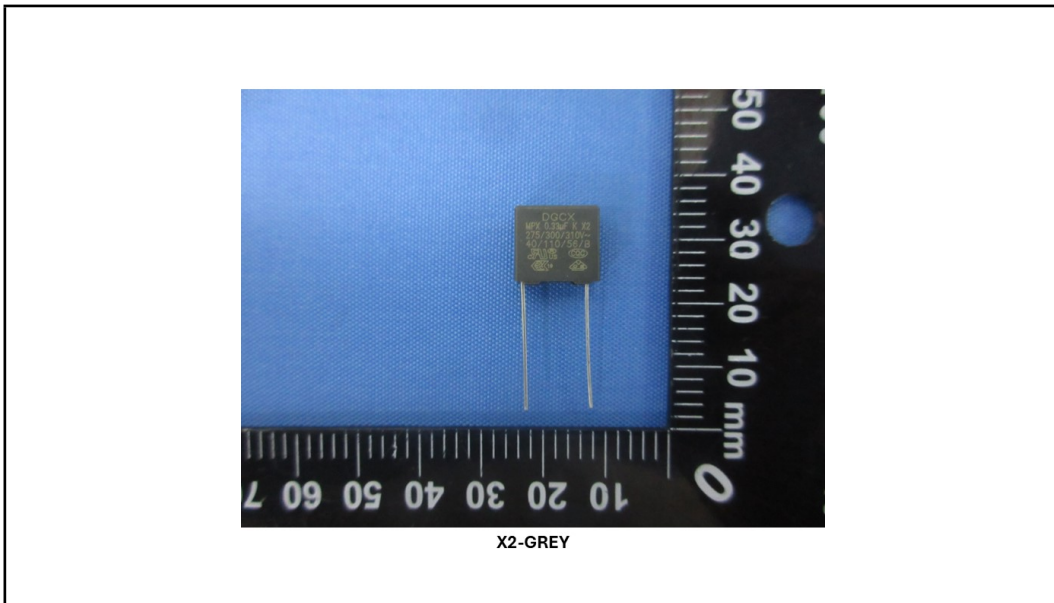
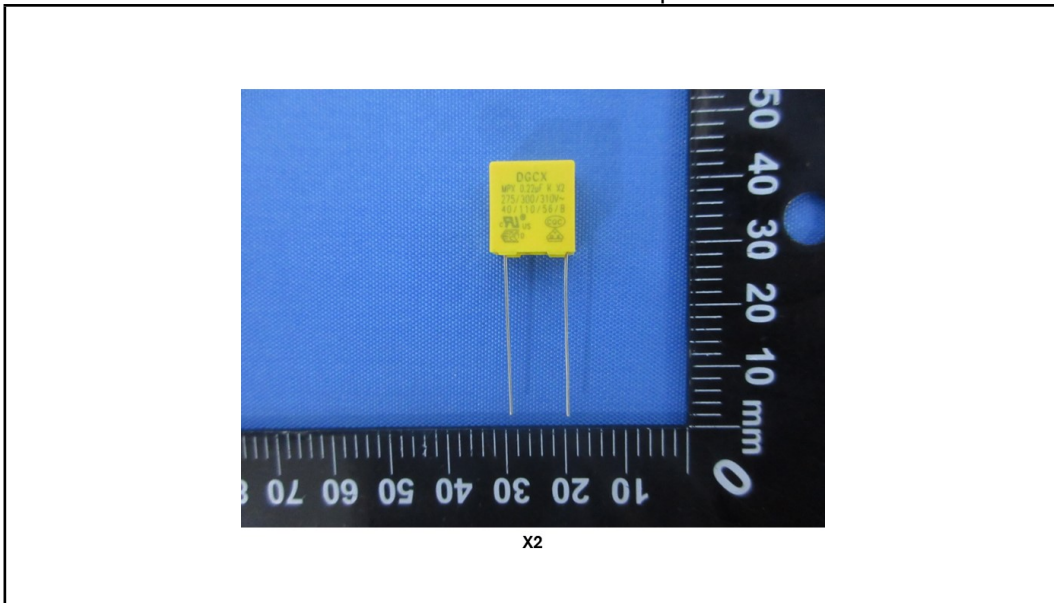
8249F16F

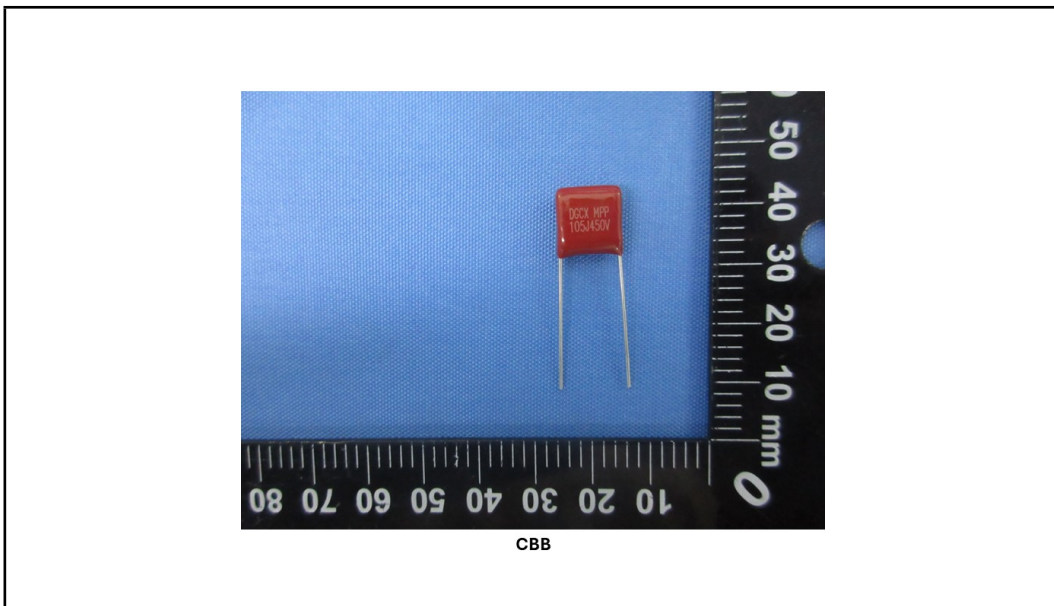
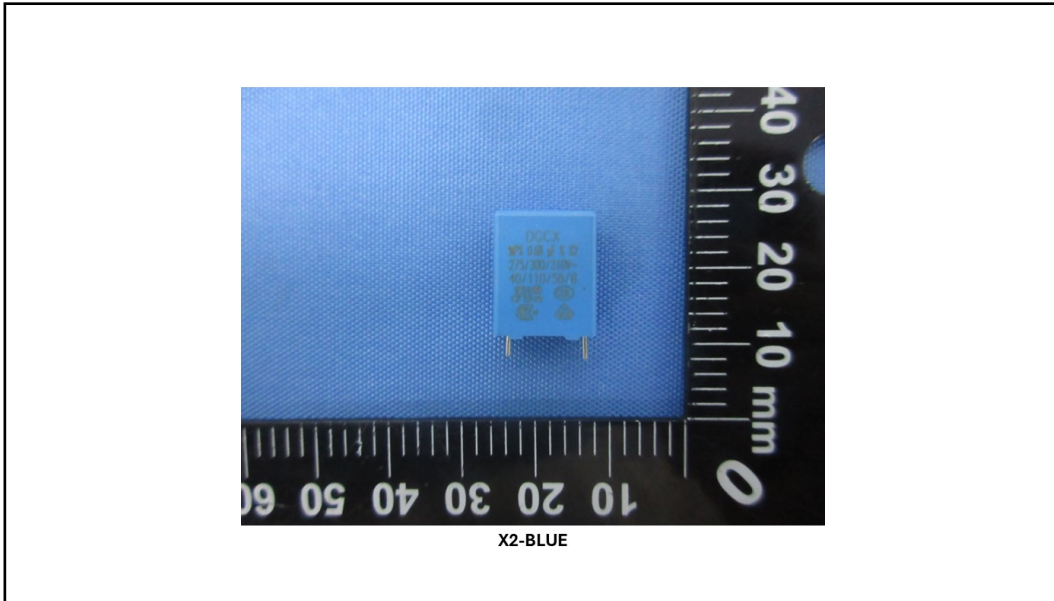


Unless otherwise agreed in writing, this document is issued by the Company subject to its General Conditions of Service printed overleaf, available on request or accessible at <https://www.sgs.com/en/Terms-and-Conditions>. Attention is drawn to the limitation of liability, indemnification and jurisdiction issues defined therein. Any holder of this document is advised that information contained hereon reflects the Company's findings at the time of its intervention only and within the limits of Client's instructions, if any. The Company's sole responsibility is to its Client and this document does not exonerate parties to a transaction from exercising all their rights and obligations under the transaction documents. This document cannot be reproduced except in full, without prior written approval of the Company. Any unauthorized alteration, forgery or falsification of the content or appearance of this document is unlawful and offenders may be prosecuted to the fullest extent of the law. Unless otherwise stated the results shown in this test report refer only to the sample(s) tested.

Attention: To check the authenticity of testing / inspection report & certificate, please contact us at telephone: (86-755) 8307 1443, or email: CN.Doccheck@sgs.com

Photo of Submitted Sample



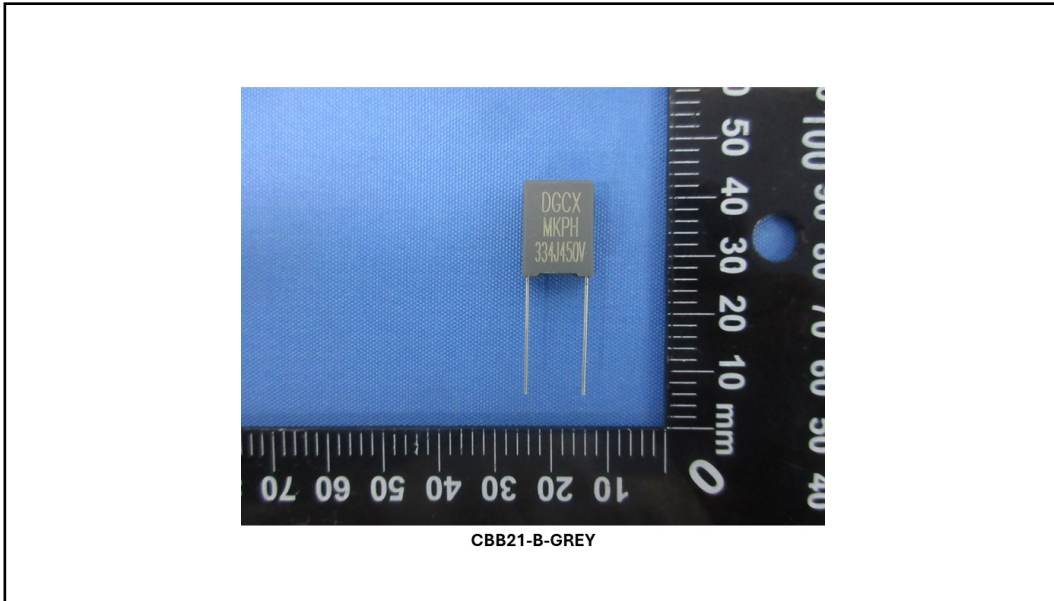


Unless otherwise agreed in writing, this document is issued by the Company subject to its General Conditions of Service printed overleaf, available on request or accessible at <https://www.sgs.com/en/Terms-and-Conditions>. Attention is drawn to the limitation of liability, indemnification and jurisdiction issues defined therein. Any holder of this document is advised that information contained hereon reflects the Company's findings at the time of its intervention only and within the limits of Client's instructions, if any. The Company's sole responsibility is to its Client and this document does not exonerate parties to a transaction from exercising all their rights and obligations under the transaction documents. This document cannot be reproduced except in full, without prior written approval of the Company. Any unauthorized alteration, forgery or falsification of the content or appearance of this document is unlawful and offenders may be prosecuted to the fullest extent of the law. Unless otherwise stated the results shown in this test report refer only to the sample(s) tested.

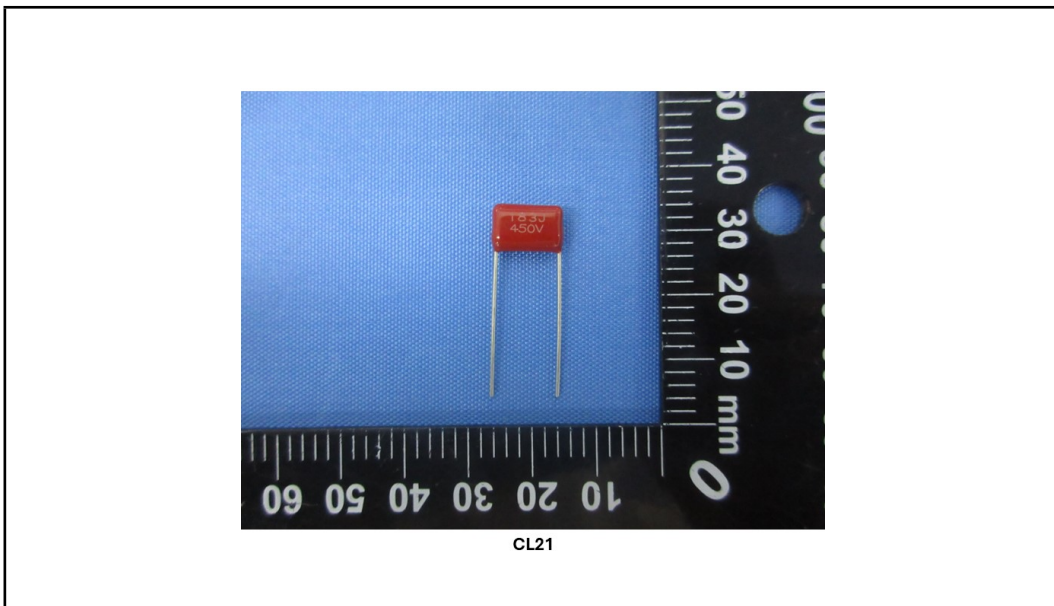
Attention: To check the authenticity of testing /inspection report & certificate, please contact us at telephone: (86-755) 8307 1443, or email: CN.Doccheck@sgs.com

Room 101-901, Plant 4 & Room 101, Plant 2 & Room 101, Plant 3 & Room 301-501, Plant 3, Jianghao (Bantian) Industrial Plant Area, No. 430, Jihua Road, Bantian Community, Bantian Street, Longgang District, Shenzhen, Guangdong, China 518129 www.sgs.com
中国·广东·深圳市龙岗区坂田街道坂田社区吉华路430号江灏(坂田)工业区厂房4号101-901、2号101、3号101、3号301-501 邮编:518129

Room 101-901, Plant 4 & Room 101, Plant 2 & Room 101, Plant 3 & Room 301-501, Plant 3, Jianghao (Bantian) Industrial Plant Area, No. 430, Jihua Road, Bantian Community, Bantian Street, Longgang District, Shenzhen, Guangdong, China 518129 www.sgs.com
中国·广东·深圳市龙岗区坂田街道坂田社区吉华路430号江灏(坂田)工业区厂房4号101-901、2号101、3号101、3号301-501 邮编:518129 t:(86-755)25328888 sgs.china@sgs.com



CBB21-B-GREY



CL21

Verification Method(s):

1. With reference to IEC 62321-2:2021, disassembly and disjointment were performed for the submitted samples.
2. With reference to IEC 62321-1:2013, tests were performed for the samples indicated by the photos in this report.
 - (1) With reference to IEC 62321-3-1:2013, screening by EDXRF spectroscopy.
 - (2) Wet chemical test method: With reference to IEC 62321-4:2013+A1:2017, IEC62321-5:2013, IEC 62321-7-1:2015, IEC 62321-7-2:2017, IEC 62321-12:2023, IEC 62321-6:2015 and IEC62321-8:2017, analyzed by ICP-OES, UV-Vis and GC-MS.



SGS Standards Technical Services Co., Ltd.
Shenzhen Branch

Unless otherwise agreed in writing, this document is issued by the Company subject to its General Conditions of Service printed overleaf, available on request or accessible at <https://www.sgs.com/en/Terms-and-Conditions>. Attention is drawn to the limitation of liability, indemnification and jurisdiction issues defined therein. Any holder of this document is advised that information contained hereon reflects the Company's findings at the time of its intervention only and within the limits of Client's instructions, if any. The Company's sole responsibility is to its Client and this document does not exonerate parties to a transaction from exercising all their rights and obligations under the transaction documents. This document cannot be reproduced except in full, without prior written approval of the Company. Any unauthorized alteration, forgery or falsification of the content or appearance of this document is unlawful and offenders may be prosecuted to the fullest extent of the law. Unless otherwise stated the results shown in this test report refer only to the sample(s) tested.

Attention: To check the authenticity of testing /inspection report & certificate, please contact us at telephone: (86-755) 8307 1443, or email: CN.Doccheck@sgs.com

Room 101-901, Plant 4 & Room 101, Plant 2 & Room 101, Plant 3 & Room 301-501, Plant 3, Jianghao (Bantian) Industrial Plant Area, No. 430, Jihua Road, Bantian Community, Bantian Street, Longgang District, Shenzhen, Guangdong, China 518129 www.sgs.com
中国·广东·深圳市龙岗区坂田街道坂田社区吉华路430号江灏(坂田)工业厂区4号101-901、2号101、3号101、3号301-501 邮编:518129 t:(86-755)25328888 sgs.china@sgs.com

Verification Part Description:

SN ID	Sample No.	SGS Sample ID	Description
SN1	A1	SZX25-0043832-0001.C001	X2 - Silvery metal pin
SN2	A2	SZX25-0043832-0001.C002	X2 - Yellow plastic shell with black printing
SN3	A3	SZX25-0043832-0001.C003	X2 - Yellow dry glue
SN4	A4	SZX25-0043832-0001.C004	X2 - Silvery material
SN5	A5	SZX25-0043832-0001.C005	X2-GREY - Gray plastic shell with yellow printing
SN6	A6	SZX25-0043832-0001.C006	X2-GREY - Gray dry glue
SN7	A7	SZX25-0043832-0001.C007	X2-BLUE - Blue plastic shell with yellow printing
SN8	A8	SZX25-0043832-0001.C008	CBB - Brown-red material with white printing
SN9	A9	SZX25-0043832-0001.C009	CBB - Silvery metal pin
SN10	A10	SZX25-0043832-0001.C010	CBB - Silvery material
SN11	A11	SZX25-0043832-0001.C011	CBB21-B-GREY - Gray plastic shell with yellow printing
SN12	A12	SZX25-0043832-0001.C012	CL21 - Brown-red material with white printing



Unless otherwise agreed in writing, this document is issued by the Company subject to its General Conditions of Service printed overleaf, available on request or accessible at <https://www.sgs.com/en/Terms-and-Conditions>. Attention is drawn to the limitation of liability, indemnification and jurisdiction issues defined therein. Any holder of this document is advised that information contained hereon reflects the Company's findings at the time of its intervention only and within the limits of Client's instructions, if any. The Company's sole responsibility is to its Client and this document does not exonerate parties to a transaction from exercising all their rights and obligations under the transaction documents. This document cannot be reproduced except in full, without prior written approval of the Company. Any unauthorized alteration, forgery or falsification of the content or appearance of this document is unlawful and offenders may be prosecuted to the fullest extent of the law. Unless otherwise stated the results shown in this test report refer only to the sample(s) tested.

Attention: To check the authenticity of testing /inspection report & certificate, please contact us at telephone: (86-755) 8307 1443, or email: CN.Doccheck@sgs.com

Verification Result(s):

In accordance with the result of material risk assessment, the following disjointed parts in the submitted sample have been verified. (Unless otherwise specified, the unit is mg/kg).

Test Item(s)	A1	A2	A3	A4	A5	A6	A7	A8
Pb	BL	BL	BL	BL	BL	BL	BL	BL
Hg	BL	BL	BL	BL	BL	BL	BL	BL
Cd	BL	BL	BL	BL	BL	BL	BL	BL
Cr(VI)▼	BL	BL	BL	BL	BL	BL	BL	BL
PBB	---	ND	BL	BL	ND	BL	ND	BL
PBDE	---	ND	BL	BL	ND	BL	ND	BL
DEHP	---	ND	BL	BL	ND	BL	ND	BL
BBP	---	ND	BL	BL	ND	BL	ND	BL
DBP	---	ND	BL	BL	ND	BL	ND	BL
DIBP	---	ND	BL	BL	ND	BL	ND	BL
Conclusion	PASS	PASS	PASS	PASS	PASS	PASS	PASS	PASS

Test Item(s)	A9	A10	A11	A12
Pb	BL	BL	BL	BL
Hg	BL	BL	BL	BL
Cd	BL	BL	BL	BL
Cr(VI)▼	BL	BL	BL	BL
PBB	---	BL	ND	BL
PBDE	---	BL	ND	BL
DEHP	---	BL	ND	BL
BBP	---	BL	ND	BL
DBP	---	BL	ND	BL
DIBP	---	BL	ND	BL
Conclusion	PASS	PASS	PASS	PASS



Unless otherwise agreed in writing, this document is issued by the Company subject to its General Conditions of Service printed overleaf, available on request or accessible at <https://www.sgs.com/en/Terms-and-Conditions>. Attention is drawn to the limitation of liability, indemnification and jurisdiction issues defined therein. Any holder of this document is advised that information contained hereon reflects the Company's findings at the time of its intervention only and within the limits of Client's instructions, if any. The Company's sole responsibility is to its Client and this document does not exonerate parties to a transaction from exercising all their rights and obligations under the transaction documents. This document cannot be reproduced except in full, without prior written approval of the Company. Any unauthorized alteration, forgery or falsification of the content or appearance of this document is unlawful and offenders may be prosecuted to the fullest extent of the law. Unless otherwise stated the results shown in this test report refer only to the sample(s) tested.

Attention: To check the authenticity of testing /inspection report & certificate, please contact us at telephone: (86-755) 8307 1443, or email: CN.Doccheck@sgs.com

Notes:

(1) Interpretation of screening results by X-ray fluorescence spectrometry (XRF):

(a) Screening limits in mg/kg for regulated elements in various matrices according to IEC 62321-3-1:2013 Annex A as below table.

Element	Polymers	Metals	Composite Materials
Cd	$BL \leq (70-3\sigma) < X < (130+3\sigma) \leq OL$	$BL \leq (70-3\sigma) < X < (130+3\sigma) \leq OL$	$LOD < X < (150+3\sigma) \leq OL$
Pb	$BL \leq (700-3\sigma) < X < (1300+3\sigma) \leq OL$	$BL \leq (700-3\sigma) < X < (1300+3\sigma) \leq OL$	$BL \leq (500-3\sigma) < X < (1500+3\sigma) \leq OL$
Hg	$BL \leq (700-3\sigma) < X < (1300+3\sigma) \leq OL$	$BL \leq (700-3\sigma) < X < (1300+3\sigma) \leq OL$	$BL \leq (500-3\sigma) < X < (1500+3\sigma) \leq OL$
Br	$BL \leq (300-3\sigma) < X$	Not applicable	$BL \leq (250-3\sigma) < X$
Cr	$BL \leq (700-3\sigma) < X$	$BL \leq (700-3\sigma) < X$	$BL \leq (500-3\sigma) < X$

(b) If the maximum allowed level restricts PBB/PBDE and Cr(VI) rather than Br and Cr, the exceptions are the XRF determinations of Br and Cr. If the quantitative results for the elements Br and/or Cr are higher than the limit (for Br calculated based on the stoichiometry of Br in the most common congeners of PBB/PBDE), the sample is "inconclusive".

(c) Results are obtained by EDXRF for primary screening, LOD = Limit of Detection, BL = Below Limit, OL= Over Limit, IN (The symbol X marks the region)=Inconclusive, where further investigation is necessary, and further chemical testing by ICP-OES (for Cd, Pb, Hg), UV-Vis (for Cr(VI)) and GC-MS (for PBB/PBDE) are recommended to be performed.

(d) The EDXRF screening test for elements – The reading may be different to the actual content in the sample be of non-uniformity composition.

(2) Screening results of Phthalates (PHTH) below the limits are shown as "BL". Further chemical testing by GC-MS is to be performed if the results exceed limits.

Test Items	CAS No.
Bis(2-ethylhexyl) phthalate (DEHP)	117-81-7
Butyl benzyl phthalate (BBP)	85-68-7
Dibutyl phthalate (DBP)	84-74-2
Diisobutyl phthalate (DIBP)	84-69-5

(3) Interpretation of results by chemical tests:

(a) mg/kg = 0.0001%, MDL=Method detection Limit, ND = Not Detected (<MDL), --- = Not Applicable.

(b) Unit and MDL in wet chemical test

Test Items	Pb	Hg	Cd	DEHP	BBP	DBP	DIBP
Unit	mg/kg	mg/kg	mg/kg	mg/kg	mg/kg	mg/kg	mg/kg
MDL	10	10	10	100	100	100	100

The MDL for single compound of PBB and PBDE is 100 mg/kg,
MDL of Cr(VI) for polymer, composite and leather sample is 10 mg/kg.
MDL of Cr(VI) for metal sample is 0.10 µg/cm².

(c) ▼ =Metal sample

a. The sample is positive for Cr(VI) if the Cr(VI) concentration is greater than 0.13 µg/cm². The sample coating is considered to contain Cr(VI).

b. The sample is negative for Cr(VI) if Cr(VI) is ND (concentration less than 0.10 µg/cm²). The coating is considered a non-Cr(VI) based coating

c. The result between 0.10 µg/cm² and 0.13 µg/cm² is considered to be inconclusive-unavoidable coating variations may influence the determination

Information on storage conditions and production date of the tested sample is unavailable and thus Cr(VI) results represent status of the sample at the time of testing.



Unless otherwise agreed in writing, this document is issued by the Company subject to its General Conditions of Service printed overleaf, available on request or accessible at <https://www.sgs.com/en/Terms-and-Conditions>. Attention is drawn to the limitation of liability, indemnification and jurisdiction issues defined therein. Any holder of this document is advised that information contained hereon reflects the Company's findings at the time of its intervention only and within the limits of Client's instructions, if any. The Company's sole responsibility is to its Client and this document does not exonerate parties to a transaction from exercising all their rights and obligations under the transaction documents. This document cannot be reproduced except in full, without prior written approval of the Company. Any unauthorized alteration, forgery or falsification of the content or appearance of this document is unlawful and offenders may be prosecuted to the fullest extent of the law. Unless otherwise stated the results shown in this test report refer only to the sample(s) tested.

Attention: To check the authenticity of testing /inspection report & certificate, please contact us at telephone: (86-755) 8307 1443, or email: CN.Doccheck@sgs.com

- (4) Restricted substances and maximum concentration values tolerated by weight in homogeneous materials under RoHS Directive: Cd: 0.01%, Pb/Hg/Cr(VI)/PBB/PBDE/DEHP/BBP/DBP/DIBP: 0.1%. The limit is quoted from RoHS Directive (EU) 2015/863.
- (5) IEC 62321 series is equivalent to EN 62321 series.
- (6) According to the declaration from the applicant, the materials of other parts in Models "X2-GREY, X2-BLUE, CBB, CBB21-B-GREY, CL21" are the same as those in Model "X2", and the results of Model "X2" for support the results of other parts in Models "X2-GREY, X2-BLUE, CBB, CBB21-B-GREY, CL21". The applicant will take the responsibility of all discrepancy and risk.

Unless otherwise stated, the decision rule for conformity reporting is based on Binary Statement for Simple Acceptance Rule ($w=0$) stated in ILAC-G8:09/2019.



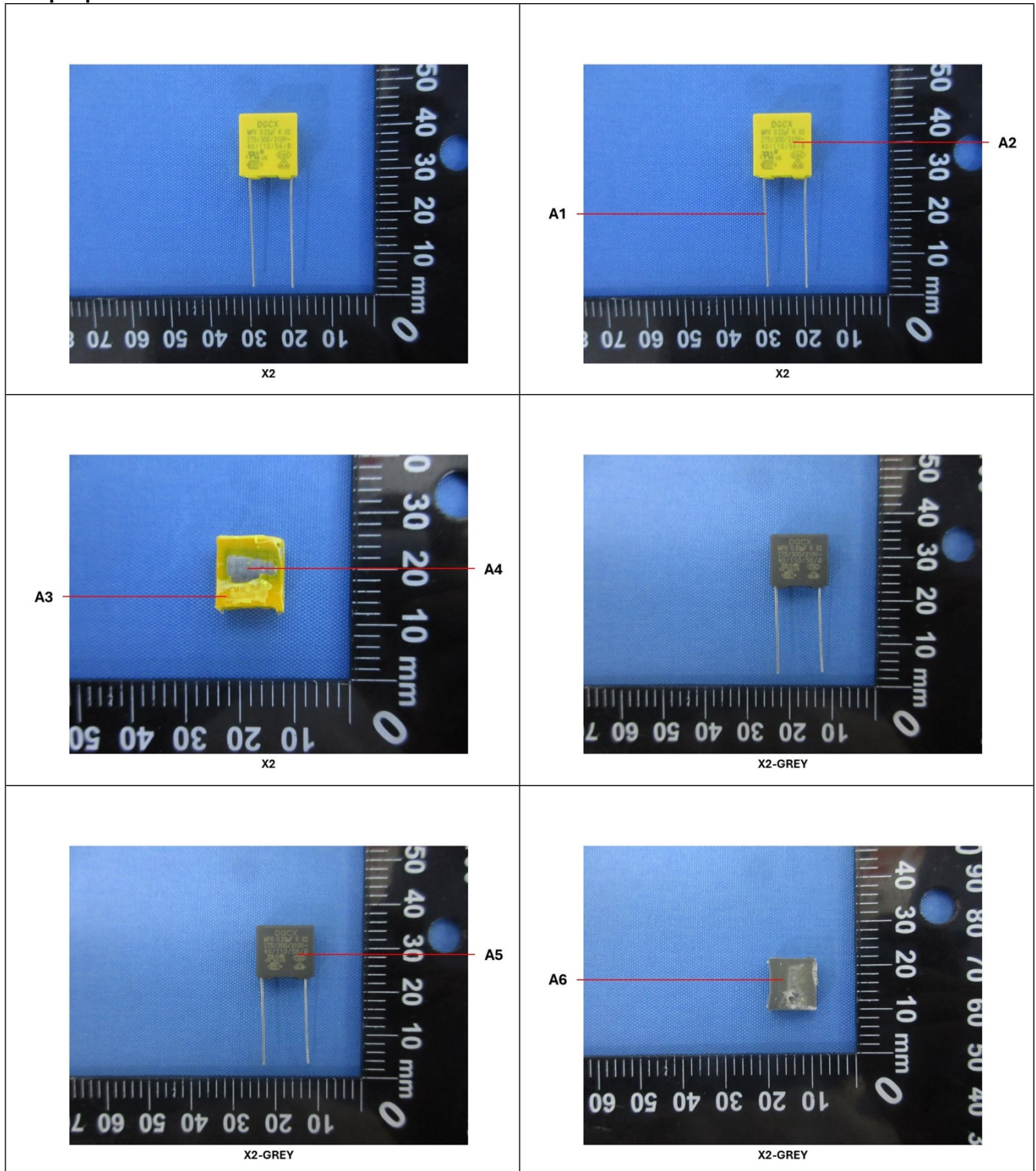
SGS-CT Standards Technical Services Co., Ltd.
Shenzhen Branch Laboratory

Unless otherwise agreed in writing, this document is issued by the Company subject to its General Conditions of Service printed overleaf, available on request or accessible at <https://www.sgs.com/en/Terms-and-Conditions>. Attention is drawn to the limitation of liability, indemnification and jurisdiction issues defined therein. Any holder of this document is advised that information contained hereon reflects the Company's findings at the time of its intervention only and within the limits of Client's instructions, if any. The Company's sole responsibility is to its Client and this document does not exonerate parties to a transaction from exercising all their rights and obligations under the transaction documents. This document cannot be reproduced except in full, without prior written approval of the Company. Any unauthorized alteration, forgery or falsification of the content or appearance of this document is unlawful and offenders may be prosecuted to the fullest extent of the law. Unless otherwise stated the results shown in this test report refer only to the sample(s) tested.

Attention: To check the authenticity of testing /inspection report & certificate, please contact us at telephone: (86-755) 8307 1443, or email: CN.Doccheck@sgs.com

Room 101-901, Plant 4 & Room 101, Plant 2 & Room 101, Plant 3 & Room 301-501, Plant 3, Jianghao (Bantian) Industrial Plant Area, No. 430, Jihua Road, Bantian Community, Bantian Street, Longgang District, Shenzhen, Guangdong, China 518129 www.sgs.com.cn
中国·广东·深圳市龙岗区坂田街道坂田社区吉华路430号江灏(坂田)工业厂区厂房4号101-901、2号101、3号301-501 邮编:518129 t (86-755) 25328888 sgs.china@sgs.com

Sample photos:

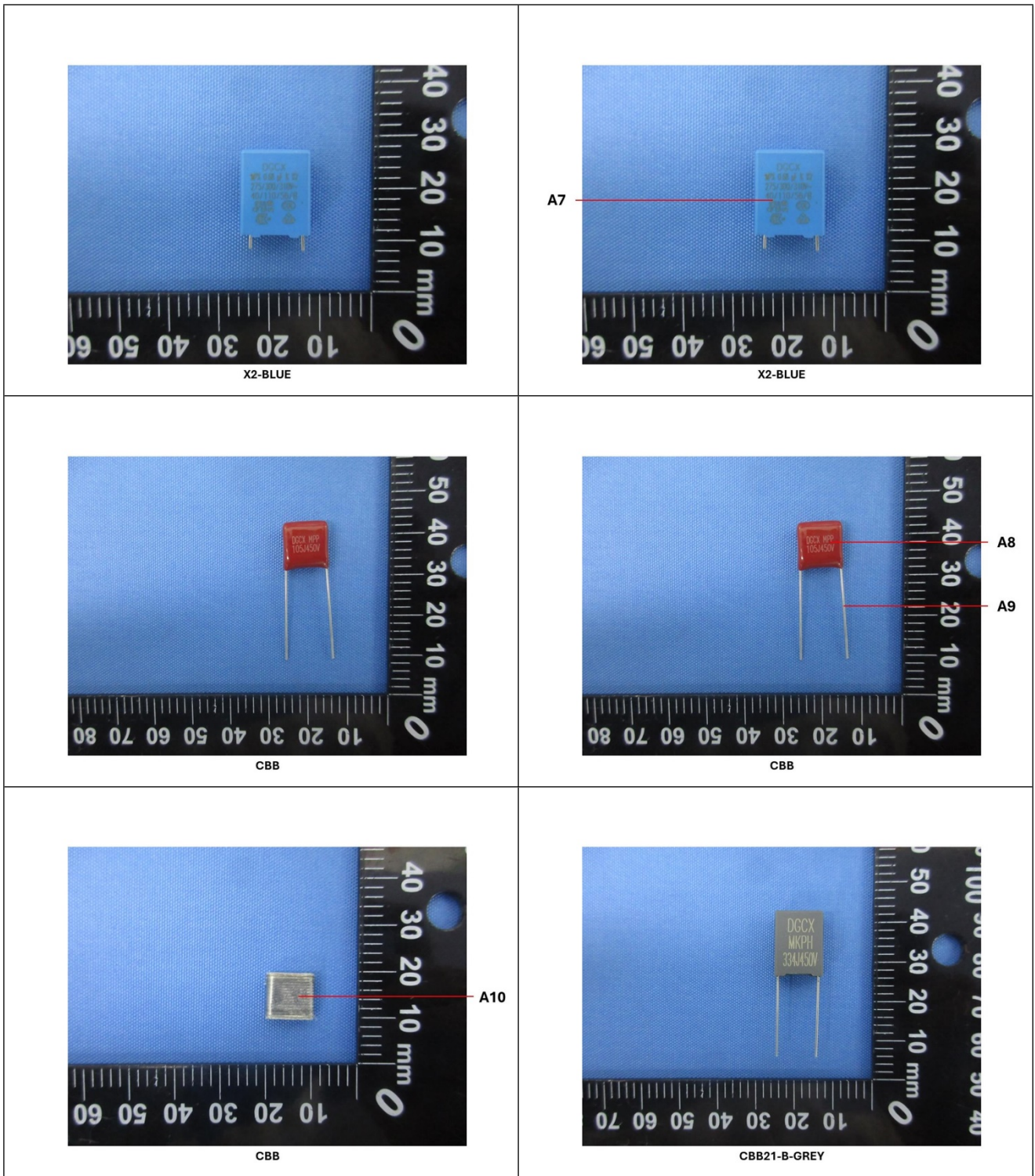


SGS-CSI Standards Technical Services Co., Ltd.
Shenzhen Branch

Unless otherwise agreed in writing, this document is issued by the Company subject to its General Conditions of Service printed overleaf, available on request or accessible at <https://www.sgs.com/en/Terms-and-Conditions>. Attention is drawn to the limitation of liability, indemnification and jurisdiction issues defined therein. Any holder of this document is advised that information contained hereon reflects the Company's findings at the time of its intervention only and within the limits of Client's instructions, if any. The Company's sole responsibility is to its Client and this document does not exonerate parties to a transaction from exercising all their rights and obligations under the transaction documents. This document cannot be reproduced except in full, without prior written approval of the Company. Any unauthorized alteration, forgery or falsification of the content or appearance of this document is unlawful and offenders may be prosecuted to the fullest extent of the law. Unless otherwise stated the results shown in this test report refer only to the sample(s) tested.

Attention: To check the authenticity of testing /inspection report & certificate, please contact us at telephone: (86-755) 8307 1443, or email: CN.Doccheck@sgs.com

Room 101-901, Plant 4 & Room 101, Plant 2 & Room 101, Plant 3 & Room 301-501, Plant 3, Jianghao (Bantian) Industrial Plant Area, No. 430, Jihua Road, Bantian Community, Bantian Street, Longgang District, Shenzhen, Guangdong, China 518129 www.sgs.com
中国·广东·深圳市龙岗区坂田街道坂田社区吉华路430号江灏(坂田)工业厂区厂房4号101-901、2号101、3号101、3号301-501 邮编:518129 t:(86-755)25328888 sgs.china@sgs.com

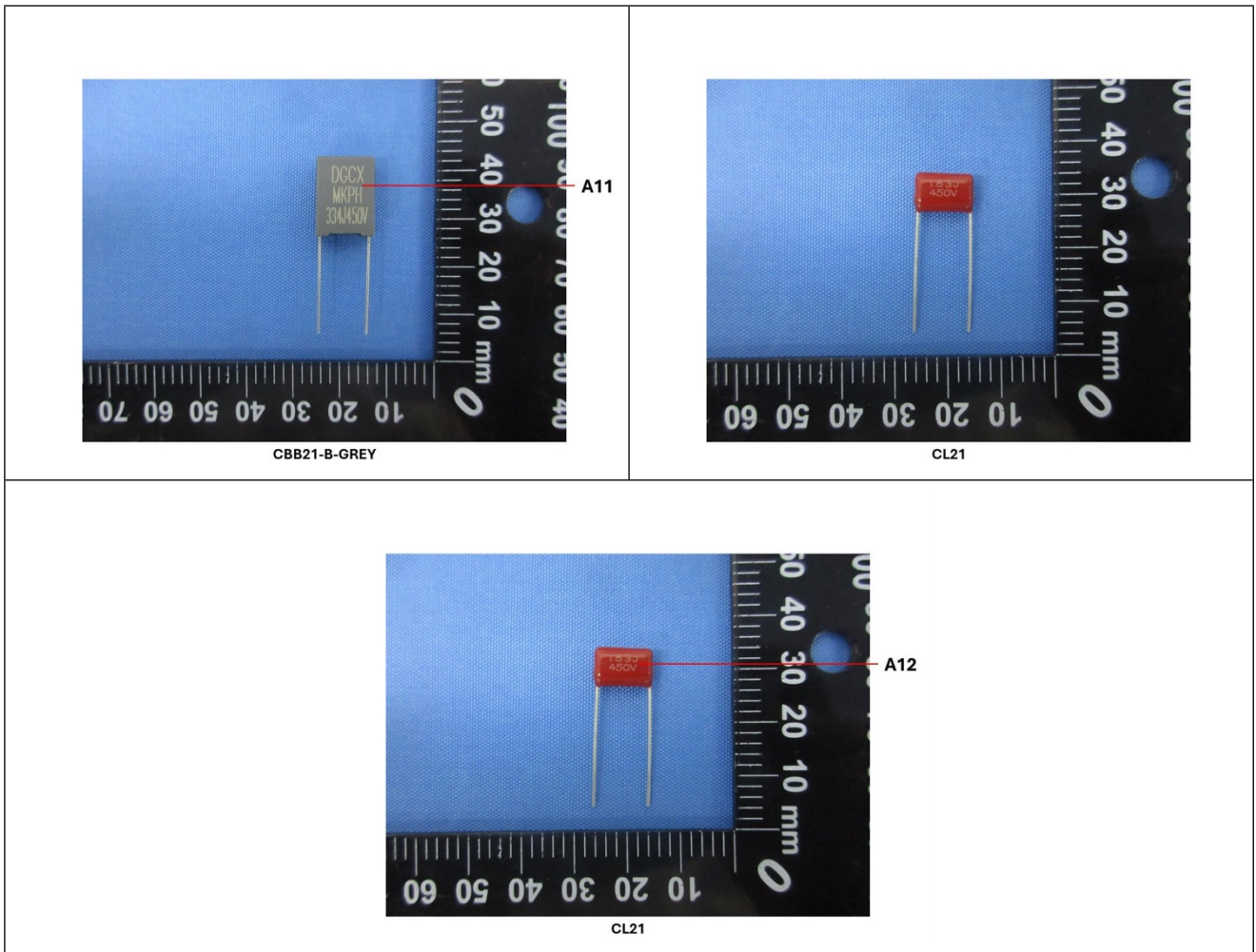


Unless otherwise agreed in writing, this document is issued by the Company subject to its General Conditions of Service printed overleaf, available on request or accessible at <https://www.sgs.com/en/Terms-and-Conditions>. Attention is drawn to the limitation of liability, indemnification and jurisdiction issues defined therein. Any holder of this document is advised that information contained hereon reflects the Company's findings at the time of its intervention only and within the limits of Client's instructions, if any. The Company's sole responsibility is to its Client and this document does not exonerate parties to a transaction from exercising all their rights and obligations under the transaction documents. This document cannot be reproduced except in full, without prior written approval of the Company. Any unauthorized alteration, forgery or falsification of the content or appearance of this document is unlawful and offenders may be prosecuted to the fullest extent of the law. Unless otherwise stated the results shown in this test report refer only to the sample(s) tested.

Attention: To check the authenticity of testing /inspection report & certificate, please contact us at telephone: (86-755) 8307 1443, or email: CN.Doccheck@sgs.com

SGS-Standard Technical Services Co., Ltd.
Shenzhen Branch

Room 101-901, Plant 4 & Room 101, Plant 2 & Room 101, Plant 3 & Room 301-501, Plant 3, Jianghao (Bantian) Industrial Plant Area, No. 430, Jihua Road, Bantian Community, Bantian Street, Longgang District, Shenzhen, Guangdong, China 518129 www.sgs.com.cn
中国·广东·深圳市龙岗区坂田街道坂田社区吉华路430号江灏(坂田)工业厂区厂房4号101-901、2号101、3号301-501 邮编:518129 t:(86-755)25328888 sgs.china@sgs.com



SGS authenticate the photo on original report only
 *** End of Report ***



Unless otherwise agreed in writing, this document is issued by the Company subject to its General Conditions of Service printed overleaf, available on request or accessible at <https://www.sgs.com/en/Terms-and-Conditions>. Attention is drawn to the limitation of liability, indemnification and jurisdiction issues defined therein. Any holder of this document is advised that information contained hereon reflects the Company's findings at the time of its intervention only and within the limits of Client's instructions, if any. The Company's sole responsibility is to its Client and this document does not exonerate parties to a transaction from exercising all their rights and obligations under the transaction documents. This document cannot be reproduced except in full, without prior written approval of the Company. Any unauthorized alteration, forgery or falsification of the content or appearance of this document is unlawful and offenders may be prosecuted to the fullest extent of the law. Unless otherwise stated the results shown in this test report refer only to the sample(s) tested.

Attention: To check the authenticity of testing /inspection report & certificate, please contact us at telephone: (86-755) 8307 1443, or email: CN.Doccheck@sgs.com

Room 101-901, Plant 4 & Room 101, Plant 2 & Room 101, Plant 3 & Room 301-501, Plant 3, Jianghao (Bantian) Industrial Plant Area, No. 430, Jihua Road, Bantian Community, Bantian Street, Longgang District, Shenzhen, Guangdong, China 518129 www.sgs.com.cn
 中国·广东·深圳市龙岗区坂田街道坂田社区吉华路430号江灏(坂田)工业厂区厂房4号101-901、2号101、3号301-501 邮编:518129 t:(86-755)25328888 sgs.china@sgs.com